



Customer information packet

ECTM4314T-G-AO

60HP, 1780RPM, 3PH, 60HZ, 364T, A3658M, TEAO, F

Class - None

Division - Not Applicable

Specifications

Enclosure	TEAO
Frame	364T
Frame Material	Iron
Frequency	60.00 Hz
Motor Letter Type	Three Phase
Output @ Frequency	60.000 HP @ 60 HZ
Phase	3
Synchronous Speed @ Frequency	1800 RPM @ 60 HZ
Voltage @ Frequency	230.0 V @ 60 HZ 460.0 V @ 60 HZ
XP Class and Group	None
XP Division	Not Applicable
Agency Approvals	CCSAUSEEV
Ambient Temperature	40 °C
Auxillary Box	No Auxillary Box
Base Indicator	Rigid
Bearing Grease Type	Polyrex EM (-20F +300F)
Current @ Voltage	70.000 A @ 460.0 V 152.000 A @ 208.0 V 140.000 A @ 230.0 V
Design Code	B
Drip Cover	No Drip Cover
Duty Rating	CONT
Efficiency @ 100% Load	95.0 %
Feedback Device	NO FEEDBACK
Heater Indicator	Heater Included, 115 V
High Voltage Full Load Amps	70.0 a
Insulation Class	F
Inverter Code	Inverter Ready
KVA Code	G
Lifting Lugs	Standard Lifting Lugs
Motor Lead Quantity/Wire Size	3 @ 4 AWG

Part detail

Revision	C
Type	AC
Mech. spec.	
Base	
Status	PRD/A
Elec. spec.	A36WG4075
Layout	617438-185
Eff. date	06-06-2023
CD Diagram	CD0180
Poles	04
Leads	3#4,6#6
Proprietary	False
Created date	03-23-2022

Motor Standards	NEMA
Motor Type	A3658M
Mounting Arrangement	F1
Number of Poles	4
Overall Length	29.96 IN
Power Factor	84
Pulley End Bearing Type	Ball
Pulley Face Code	Standard
Service Factor	1.15
Shaft Diameter	2.374 IN
Shaft Ground Indicator	Shaft Grounding
Shaft Rotation	Reversible
Shaft Slinger Indicator	No Slinger
Speed	1780 rpm
Speed Code	Single Speed
Starting Method	Direct on line
Thermal Device - Bearing	None
Thermal Device - Winding	None

Nameplate

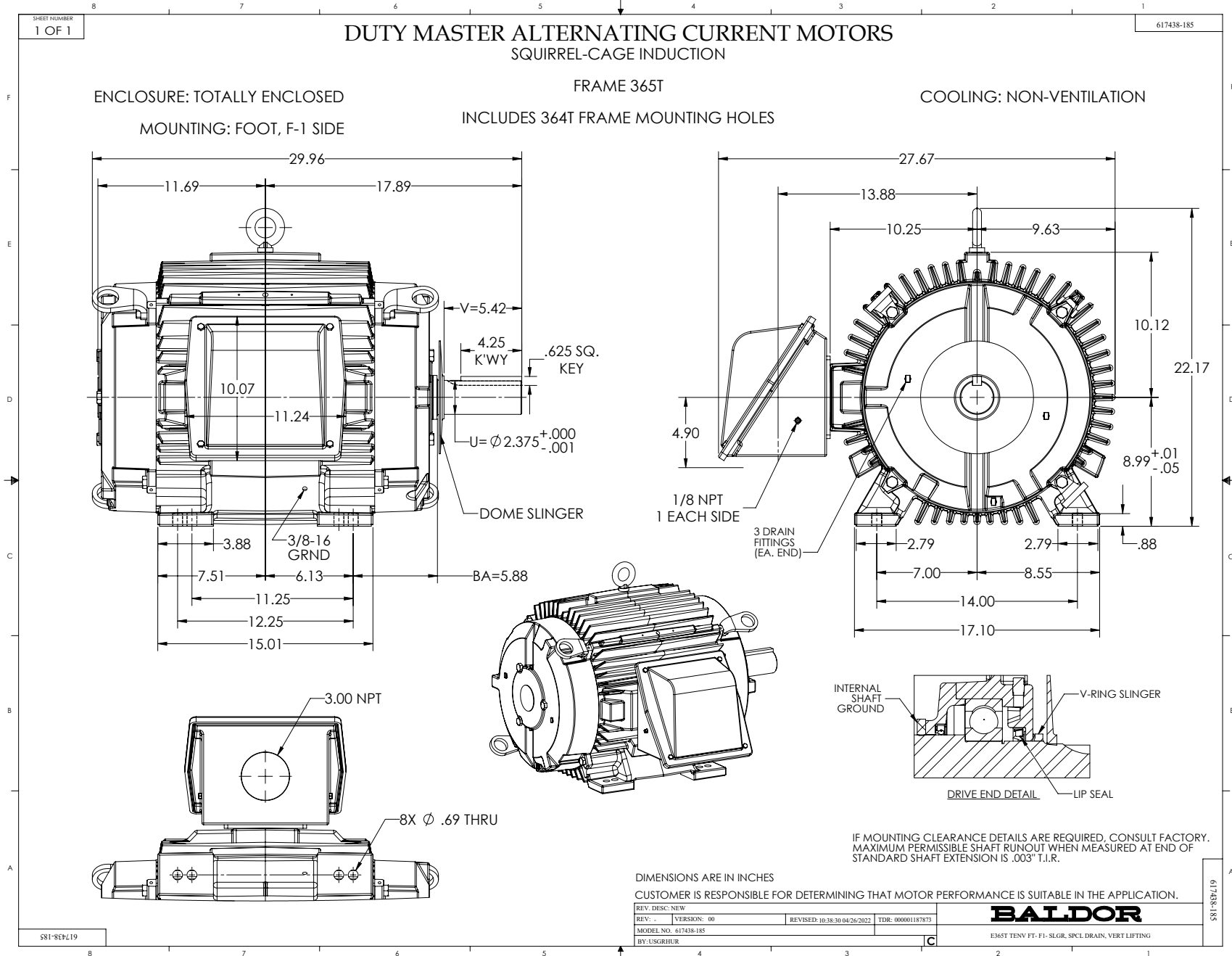
NP4486											
CAT.NO.	ECTM4314T-G-AO			SPEC NO.	A36-7876-4075						
HP	60HP	AMPS	140/70	VOLTS	230/460	DESIGN	B				
FRAME	364T	RPM	1780	HZ	60	AMB	40	SF	1.15		
DRIVE END BEARING	65BC03JGG30A		PH	3	DUTY	CONT		INSUL.CLASS	F		
OPP D.E. BEARING	65BC03JGG30A		TYPE	P	ENCL	TEAO		CODE	G		
D.E.BRG.DATA	6313		POWER FACTOR	84		NEMA NOM EFFICIENCY	95				
O.D.E.BRG.DATA	6313		MAX CORR KVAR	15.00		GUARANTEED EFFICIENCY	94.1				
3/4 LOAD EFF.	95		NEMA NOM/CSA QUOTED EFF								
SER.NO.				MOTOR WEIGHT	952						

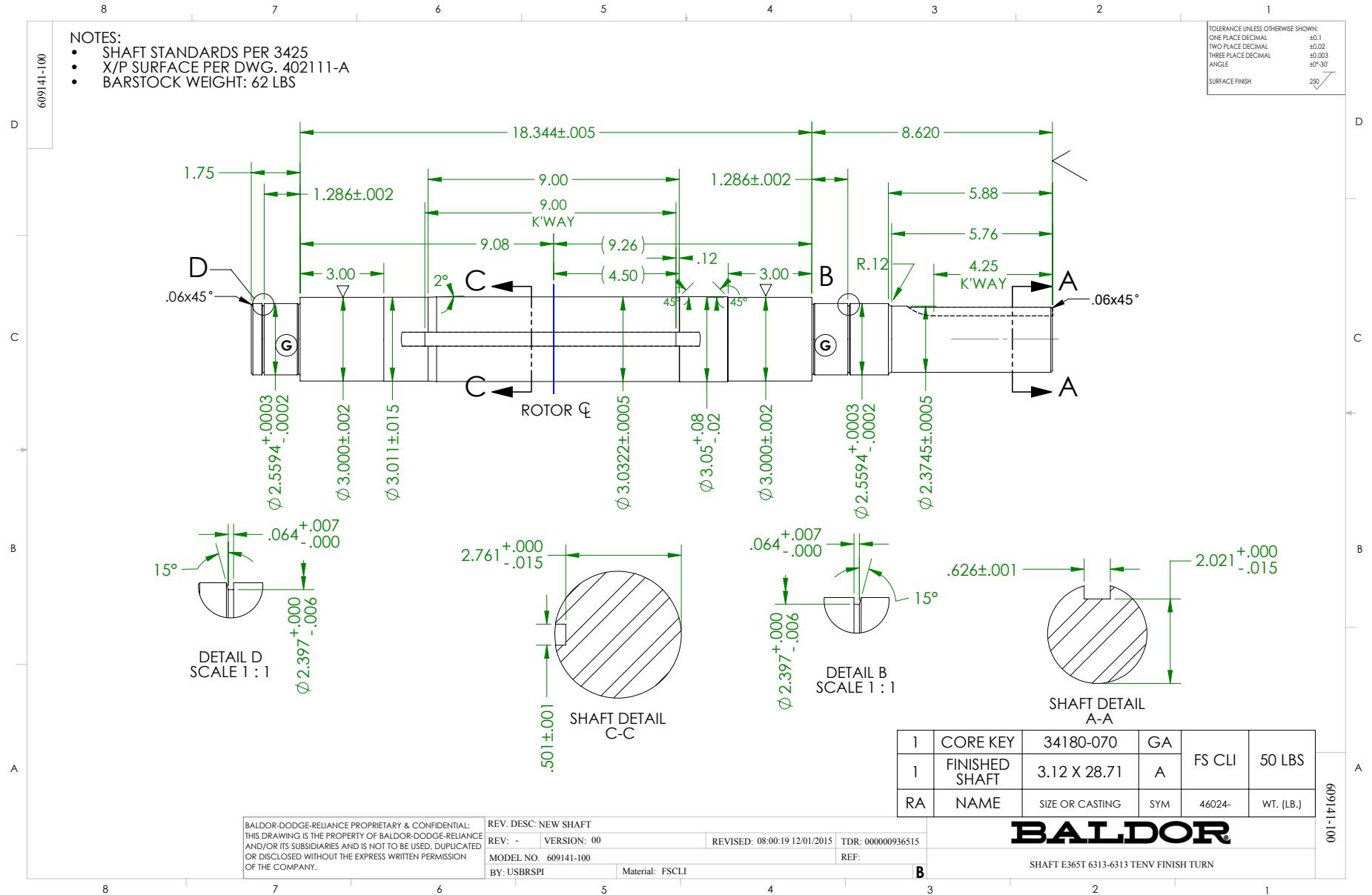
000901002AAA

1000 MIN FPM @ RATED HP AND SF

INV DUTY 20:1VT

AIR OVER MOTOR





CD0180



LOW VOLTAGE
(2D)



HIGH VOLTAGE
(1D)



NOTES:

1. INTERCHANGE ANY TWO LINE LEADS TO REVERSE ROTATION.
2. OPTIONAL THERMOSTATS ARE PROVIDED WHEN SPECIFIED.
3. ACTUAL NUMBER OF INTERNAL PARALLEL CIRCUITS MAY BE A MULTIPLE OF THOSE SHOWN ABOVE.
4. LEAD COLORS ARE OPTIONAL. LEADS MUST ALWAYS BE NUMBERED AS SHOWN.

CD0180

REV. DESC: ADD CLASS CONN00000007		
REV. LTR: D	VERSION: 01	TDR: 000001099922
FILE: \AAA\00005\148	REVISED: 10: 25: 29 02/19/2019	BY: ENBRIRO
MTL: -	© □	

BALDOR - RELIANCE®

3PH, DV, 9 LEADS, DELTA CONNECTION

SH 1 of 1